

data4pt



Facilitators, the DATA4PT experts
Christophe Duquesne
Kasia Bourée
Nick Knowles

DATA4PT short overview
Anastasia Founta, ITxPT



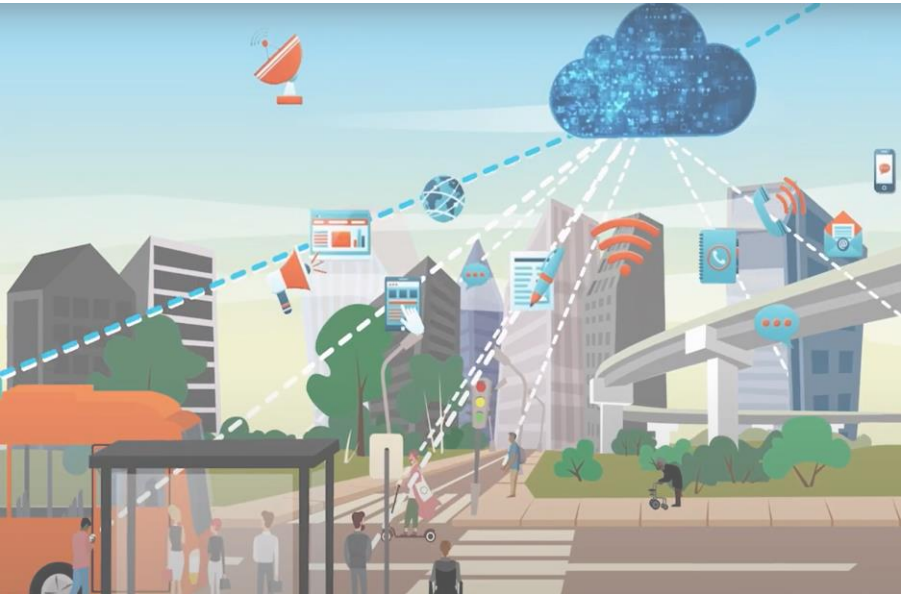


AGENDA

| Time | Topic | Facilitator |
|---------------|--|---|
| 09:30 – 09:35 | Short introduction (DATA4PT framework) | Anastasia Founta |
| 09:35 – 09:40 | NeTEx alternative modes background (stakeholders involved, Transmodel, and MMTIS DR) | Kasia Bourée |
| 09:40- 09:50 | Functional scope of NeTEx Part 5 | Christophe Duquesne Nick Knowles |
| 09:50 – 10:20 | Use cases-examples Intermodal trip plan (10') Bike sharing (10') Car- pooling (10') | Kasia Bourée Nick Knowles Christophe Duquesne |
| 10:20 – 10:25 | References – available resources | |
| 10:25 – 10:30 | Q&A | |



A CEF Programme
Support Action
(2020-2023) to
**accompany and
facilitate** Member States
and other relevant
stakeholders
**in the implementation of
MMTIS Delegated
Regulation**





More information on DATA4PT (training material, tools, request of support, technical info...)

https://data4pt-project.eu/

data4pt

ABOUT • TECHNICAL SUPPORT KNOWLEDGE BASE LIBRARY NEWS & EVENTS CONTACT

DATA VALIDATION TOOL
VERIFY HOUR NEXTEX DATA

Data4PT

The DATA4PT project aims to advance data-sharing practices in the public transport sector by supporting the development of data exchange standards and models, to fulfil the needs of multimodal travel information service providers.

By supporting EU Member States in deploying a set of harmonised European public data standards (Transmodel, NeTEx and SIRI), DATA4PT wants to enable union-wide multimodal travel information services and contribute to a seamless door-to-door travel ecosystem across Europe that covers all mobility services.

I WANT TO KNOW MORE

https://data4pt.org/

data4pt

Page Discussion

NeTEx

Contents [hide]

- 1 NeTEx overview
- 2 NeTEx-Light
- 3 NeTEx EPIP
- 4 NeTEx national and EU minimum profiles inventory
- 5 NeTEx software / tools
 - 5.1 Conversion of NeTEx between other formats
 - 5.2 Data Validation tools
 - 5.3 Language bindings and software development aids
 - 5.4 Editing /Management & visualisation tools for NeTEx data
 - 5.5 NeTEx data enabled
 - 5.6 Planning system supporting native NeTEx export
- 6 NeTEx Part 5 for New Modes
 - 6.1 Technical artefacts
 - 6.2 Canonical mapping with GBFS
- 7 References

NeTEx overview

NeTEx has been developed under the aegis of CEN (Comité Européen de Normalisation) and is the most recent systemise and harmonize European passenger information data.



Webinar: NeTEx Validation Tool

6 December 2022, 15.30 CET, online

On 6 December, the DATA4PT Team is happy to invite you to a webinar on its NeTEx Validation Tool. This event aims to make participants familiar with the use of the validator and support them in the process of validation.

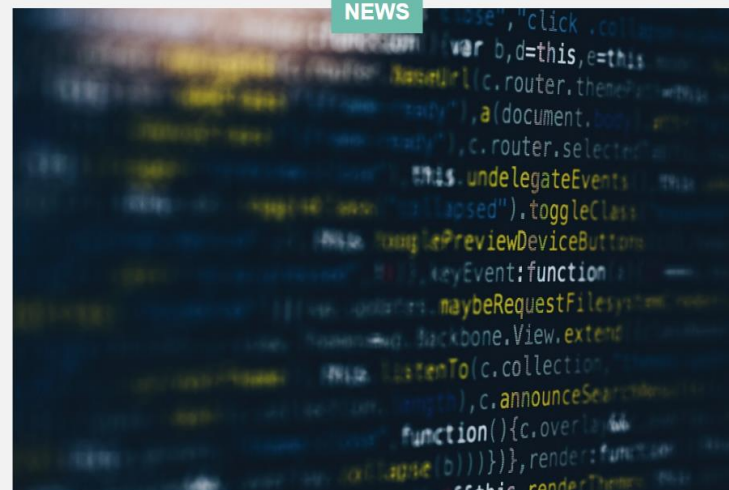
The draft agenda is as follows :

- Introduction: explain why the tool is important for the community
- Demonstration of the tool
- Explain the validation rules and show examples from datasets checked so far
- Show how to customise the tool for your own needs

The full agenda is coming soon, so stay tuned!

You can register for this event [here](#).

NEWS





Transmodel & NeTEx for Alternative modes - background



Facilitating interoperability and integration of demand responsive transport

regulatory context: MMTIS Reg. 2017/1926

Demand-responsive modes ("Alternative Modes")

Shuttle bus, shuttle ferry, taxi, car-sharing, car-pooling, car-hire, bike-sharing, bike-hire.

Location search (demand-responsive modes):

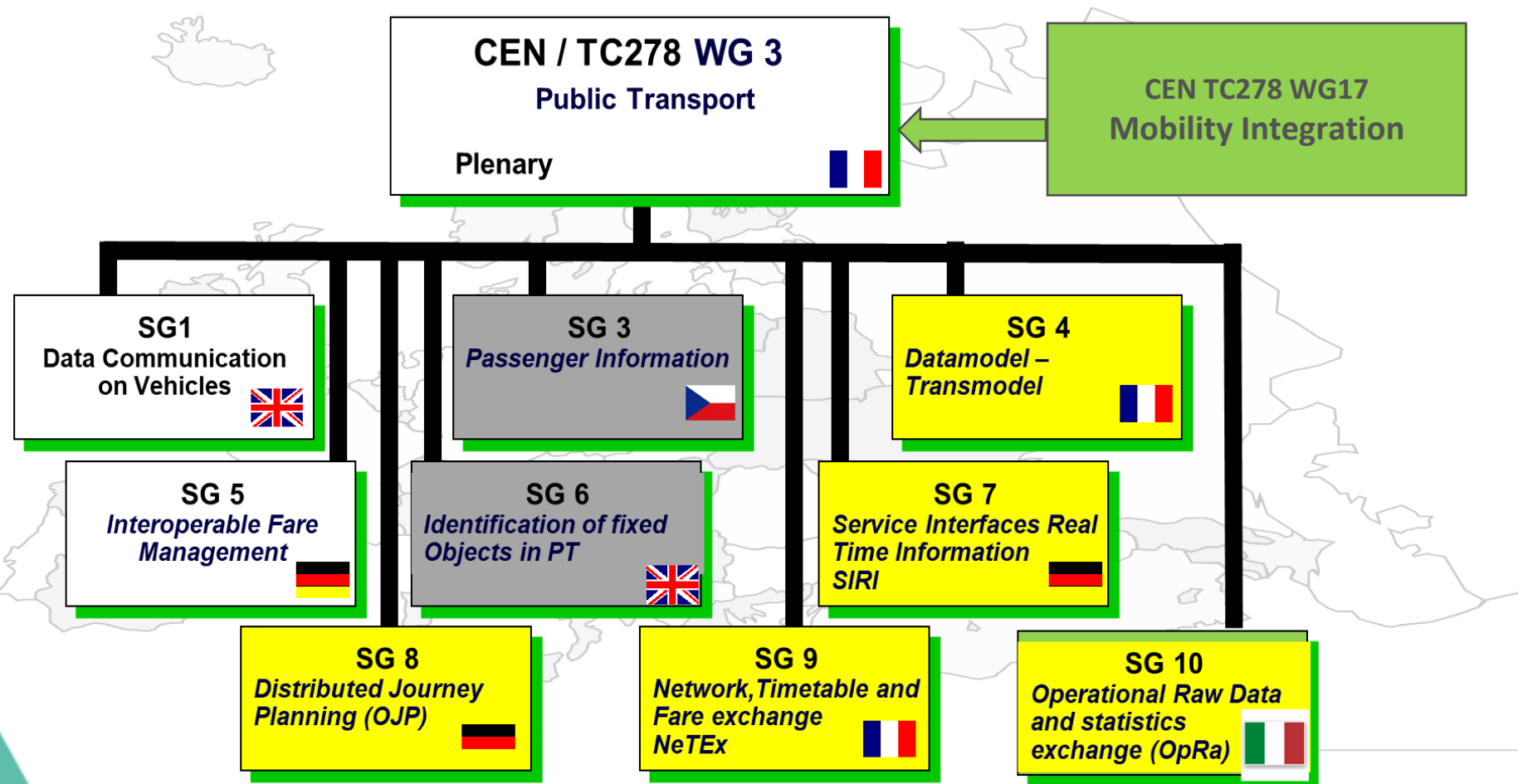
- (i) Park & Ride stops
 - (ii) Bike sharing stations
 - (iii) Car-sharing stations
 - (iv) Publicly accessible refuelling stations for petrol, diesel, CNG/LNG, hydrogen powered vehicles, charging stations for electric vehicles
5. Secure bike parking (such as locked bike garages)

Information service:

Where and how to buy tickets for demand responsive modes (incl. retail channels, fulfilment methods, payment methods)



Development Context: CEN TC278





Stakeholders involved in NeTEx Part 5 and Transmodel Part 10

- **NeTEx Working Group (SG9)** and project team
 - More than 100 experts following and contributing to the online project
 - A project team of 6 experts plus several contributors from ENTUR, SBB and SG4
- **Transmodel Subgroup (SG4)** and a project team within WG17 (mobility integration) of TC 278
- A lot of liaisons

BSC

Bird

Bolt

Communaut

Cycle Industry Europe

DATA4PT / PSA II

DATEX II Italy

DG MOVE EU

Municipality of

Amsterdam

NL Ministry

Eurocities

French Ministry of

Transport

Open Mobility

Foundation

Share (Car Sharing)

POLIS

TC278 WG3 ITS for

Public Transport

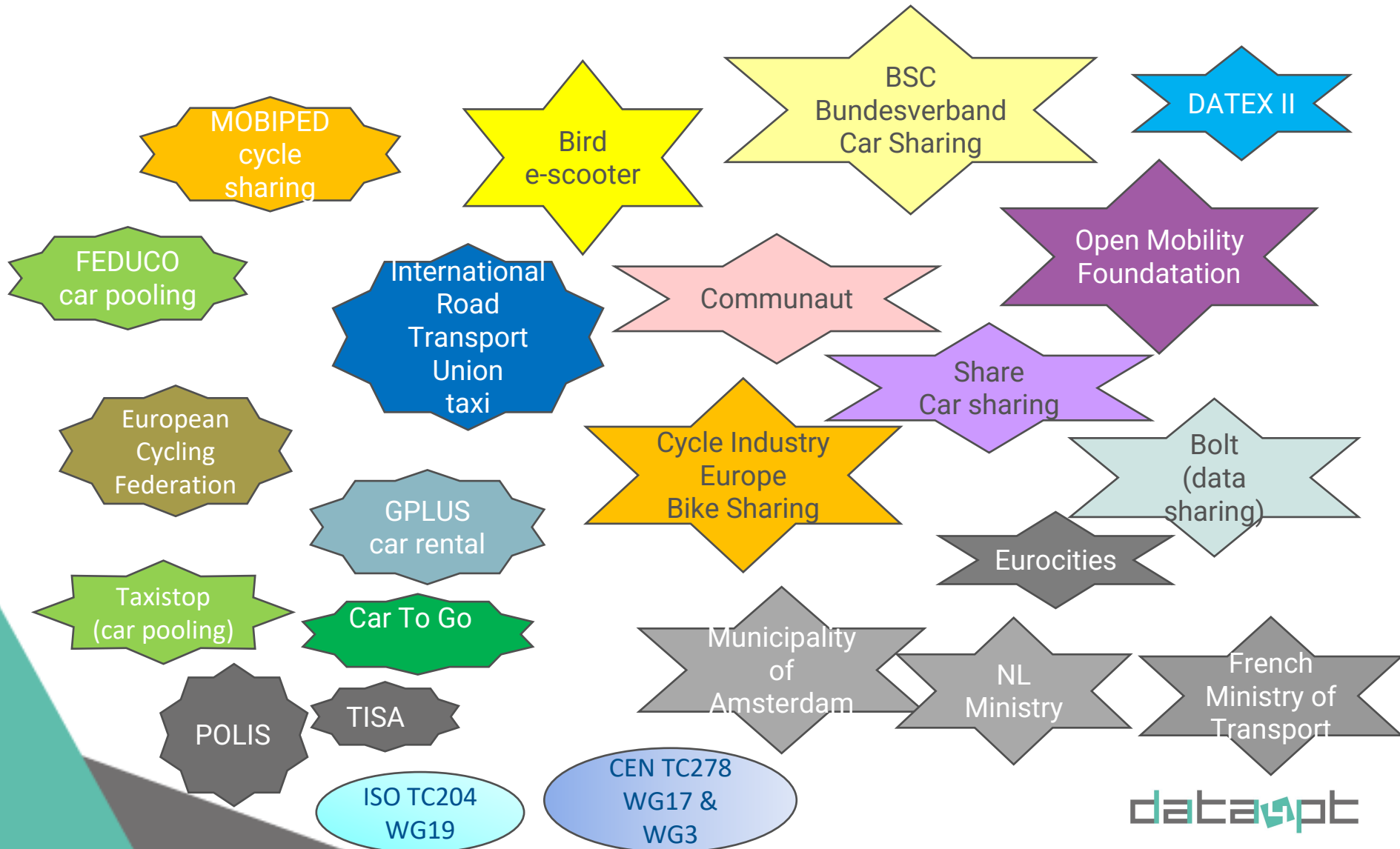
TC278 WG8 / DATEXII

PSA

TC278 WG17 Urban ITS



Stakeholders involved/contacted during the development of Transmodel-10 and NeTEx-5 2016-2021



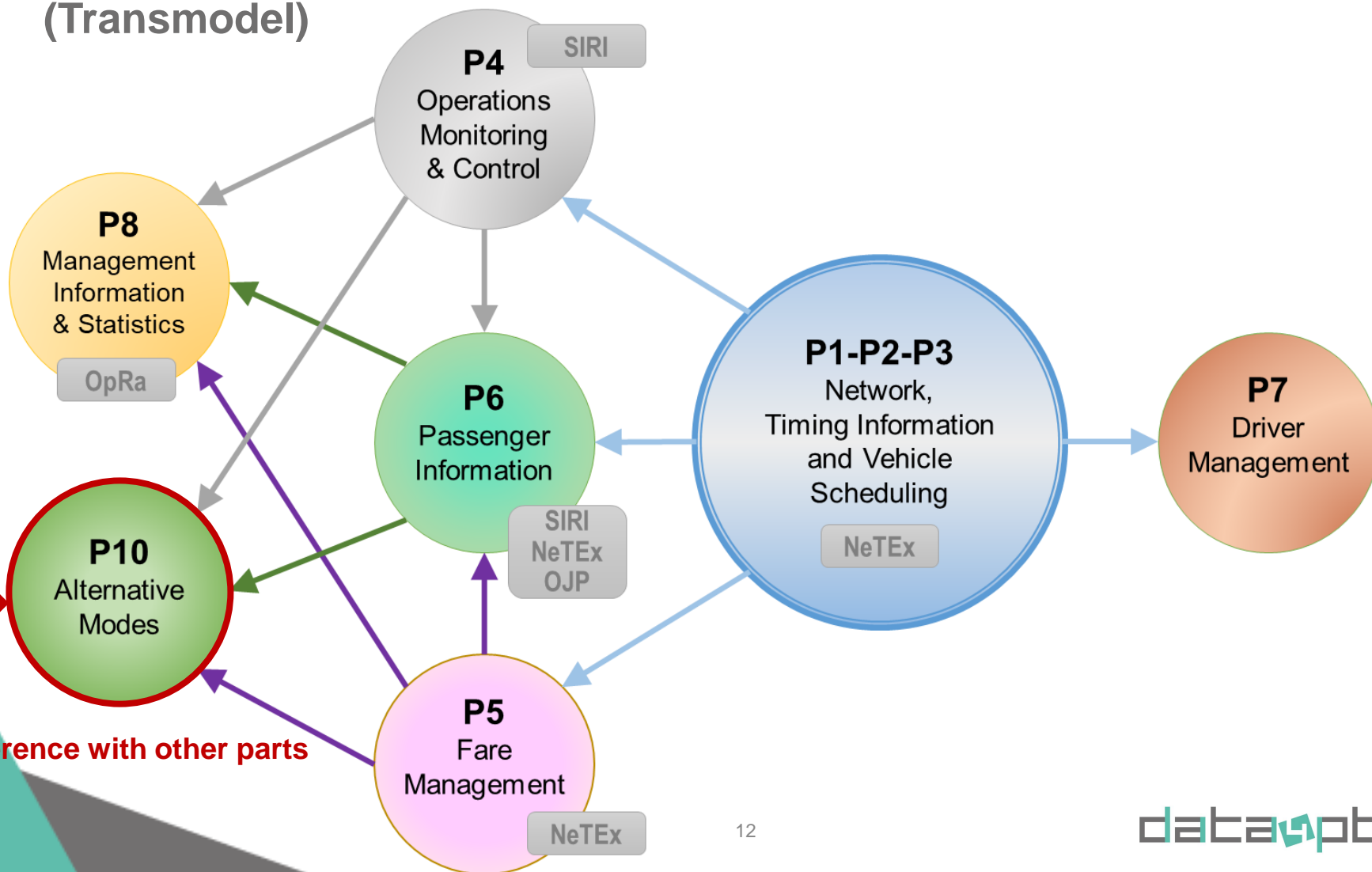


Transmodel



Facilitating interoperability and **integration** of demand responsive transport

HOW: extension of the existing data model EN12896 (Transmodel)





Facilitating interoperability and integration of alternative modes of transport

HOW: **extension of the existing parts of NeTEx**

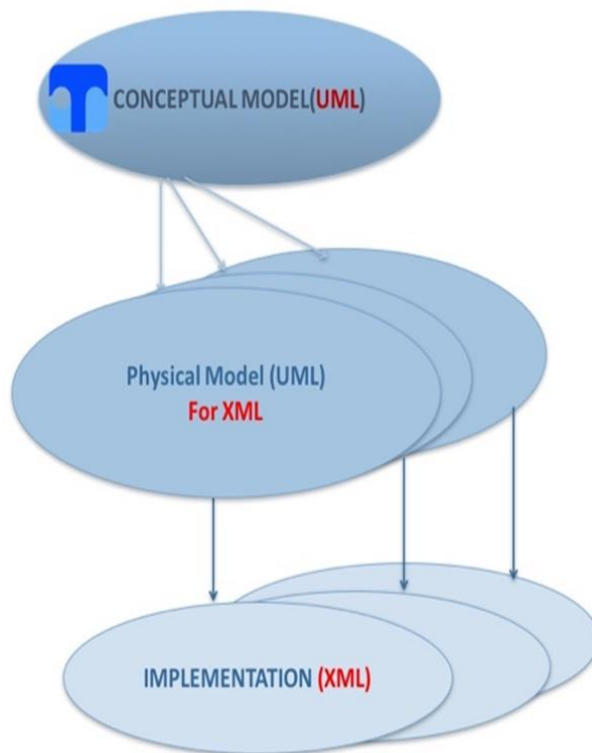
■ Conceptual model is implementation independent (Transmodel)

■ Multiple physical models for different target implementations may be derived from one conceptual model

■ Example : NeTEx XML Physical design

■ Implementation is derived from physical model

■ Example: NeTEx XML Schema



Transmodel-10 data model (structures) for vehicle sharing, pooling, rental, taxi



NeTEx-5
Data exchange format for the information modelled by Transmodel-10

And

SIRI
Facility Monitoring,
Estimated Timetable, etc.

Booking and purchase are not Covered by NeTEx and SIRI
(see *TOMP*, etc. ...)





APIs versus Bulk exchanges



Journey planners require two types of data exchange

To make user queries

- Dynamic queries at runtime (API way)
 - OJP (stops, trips), SIRI (departures, etc)

To Provision journey planners them so they have the correct data

- Static exchange before: of Network, Services. schedules, Sales offers way
- NeTEx, GTFS



Transmodel covers full data life cycle

TRANSMODEL

Conceptual data model covering all the public transport data domain

NeTEx

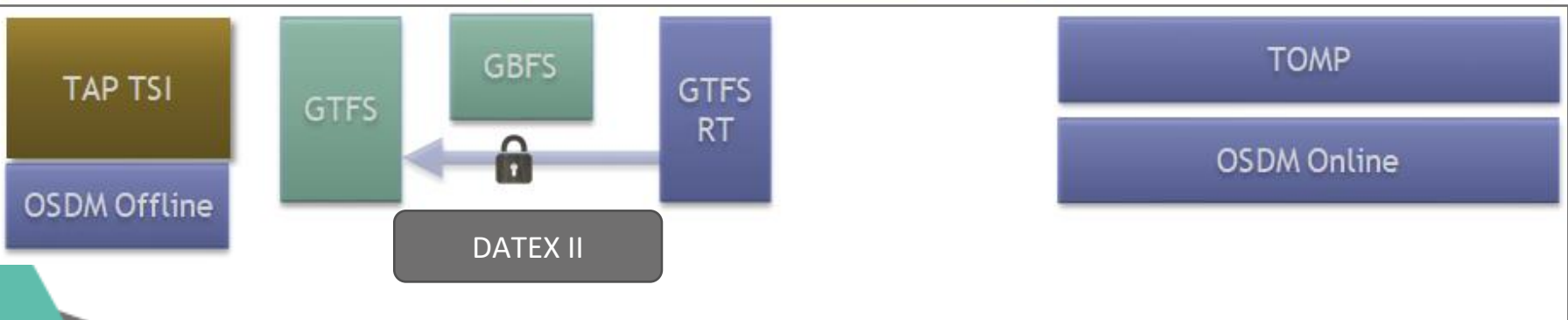
Exchange data format for scheduled information

SIRI

Exchange data format for real time information

OJP

Open Journey Planner API





NeTEx Part 5 Functional scope



NeTEx : Scope

Planned data

(any information known in advance)

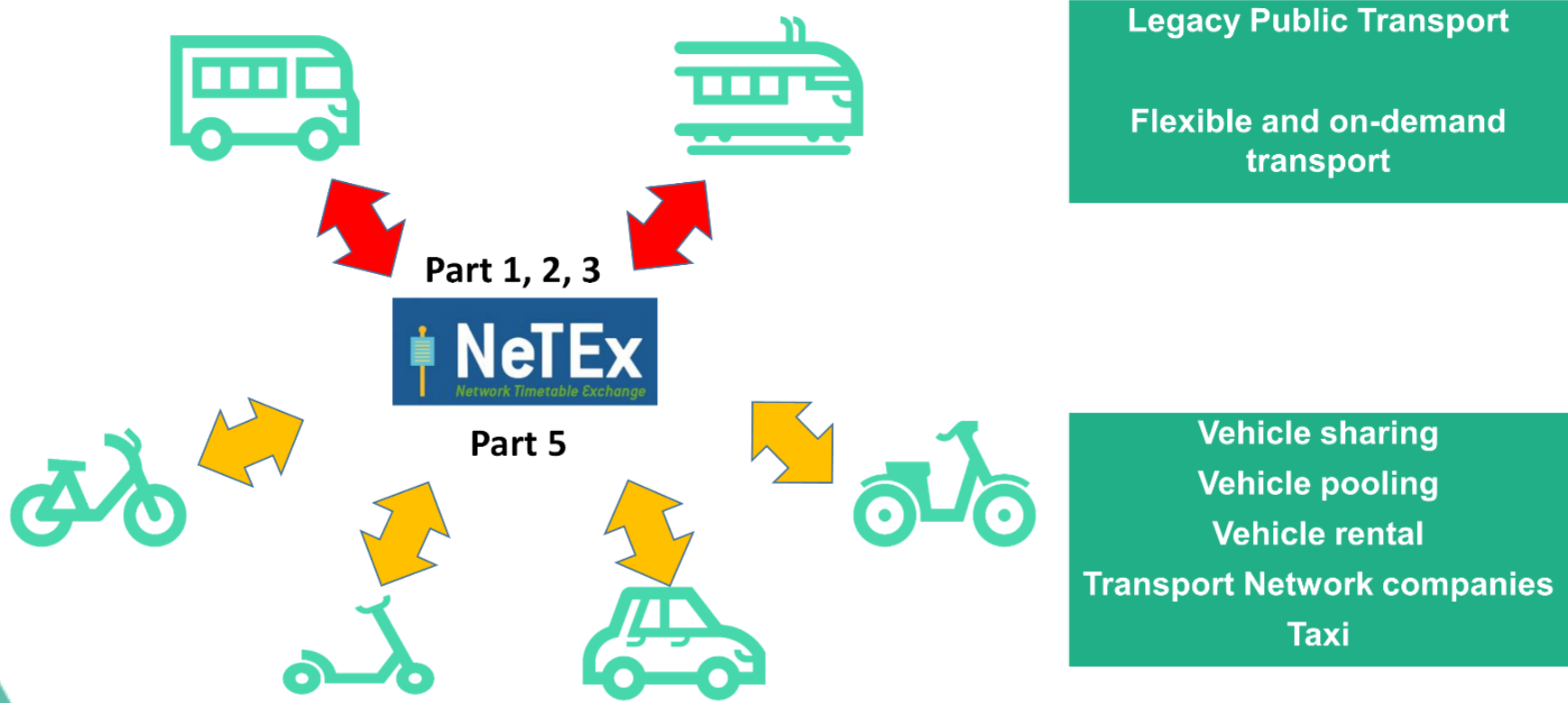
VERSUS “real time” data

(and not Dynamic data)





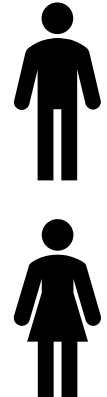
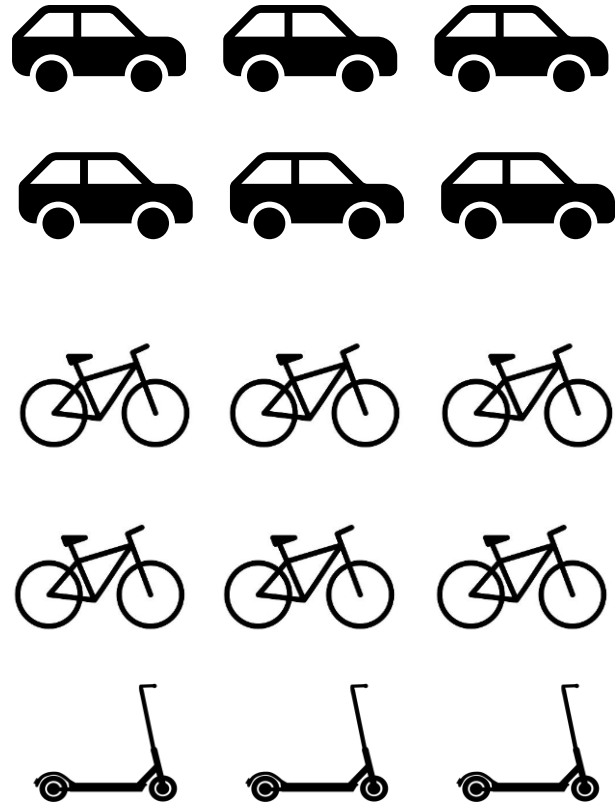
NeTEx: covers all public transport modes (collective and individual)





NeTEx Part 5: Vehicle sharing

- Vehicles
- Fleets
- Detailed Stations (and connection/integration with other modes)
- Vehicle access devices
- Online services and apps
- Vehicle sharing operator
- Geofencing
- Booking information
- Fare offer
- User account





NeTEx Part 5 : Taxi and Transport Network companies

- Vehicles
- Taxi stand and pick-up/drop off place
- Taxi and TNC companies (chauffeured cars, Uber, etc. ...)
- Online services and apps
- Booking information
- Fare offer
- User account





NeTEx Part 5 : Vehicle rental

- Vehicles.
- Parking (possible areas in a parking).
- Rental companies.
- Online services and apps.
- Booking information.
- Fare offer.
- User account.





NeTEx Part 5 : Vehicle pooling

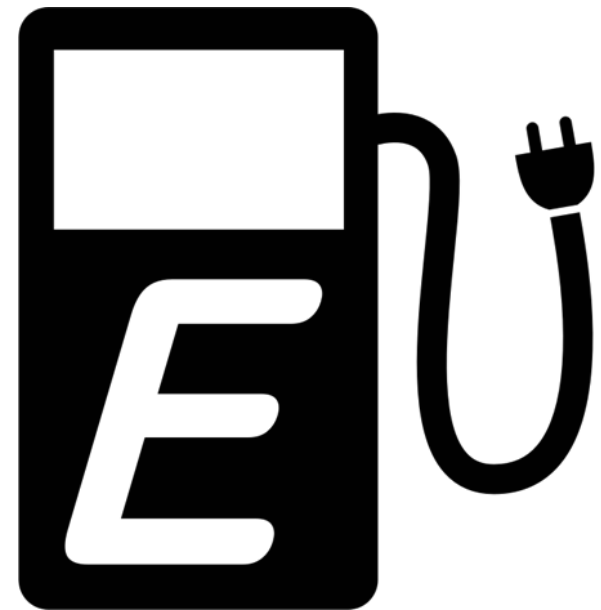
- Vehicles.
- Driver and traveler profiles.
- Vehicle pooling offers.
- Carpooling areas (and connection/integration with other modes).
- Pick-up/drop off place.
- Vehicle pooling places.
- Online services and apps and associate organisation.
- Booking information.
- Fare offer.
- User account.





NeTEx Part 5 : Vehicle Refueling/ Recharging

- Location.
- Charging station characteristics.
- Battery and vehicle characteristics.
- For all modes (car, bike, scooter, bus, etc.).
- Online services and apps.
- Booking information.
- Fare offer.
- User account.





SIRI for Real time data

Availability of vehicles

Realtime information on all available vehicles and where (rental station) they are.

Availability of parking places

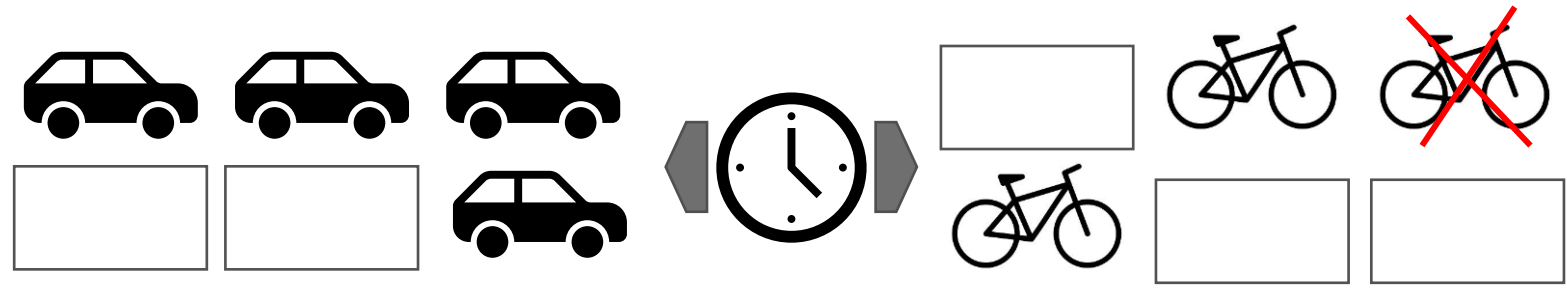
Realtime information on all available spaces to park the vehicles and where they are.

Vehicle Position

Location of vehicles (especially for free floating).

Vehicle and place status

Whether a vehicle or a docking place is properly working or has limitations





Some additional available key concepts

Mode of transport and modes of operation

Transport Modes are enhanced to be able to describe travel by Alternative Modes (bicycle, scooters, etc.). A new concept of Mode of Operation is introduced that allows to distinguish between operation as an alternative mode (Vehicle Pooling, Vehicle Sharing, Rental, etc.) and operation as a classical mode (e.g. Scheduled service) .

Alternative Mode services and associated online/mobile access

Mobility Services are added to cover Vehicle Sharing Services, Pooling Services (including chauffeured car and taxi) and Rental Services. Access and Contact details for support can be described.



Intermodal trip example

First leg of the trip with car sharing, connection with train



NeTEx provides the data format for / information for

- **Access Leg** (at start and end of trip to reach transport)
- **Alternative Mode Leg:** Car sharing trip part
- PT Ride Leg: Train trip part
- **Vehicle Sharing Parking Area:** (Car sharing Station) and its **Availability within a given zone**
- **Connection:** (Walking distance) between Vehicle Sharing Parking Area & (Train/bus) Stop Place.
- **Location:** Address of the Car sharing Stations.
- **Vehicle Access Code:** Access credentials of the vehicle
- **Booking Arrangements** (how to book) a car (at C) the Train, or the whole trip
- **(Estimated) price** of the trip (e.g. combined fare car sharing + train)
- **Where / How to pay**
- Departure Times at station S

SIRI provides dynamic APIs for

- The real time availability of vehicles
- The real time availability and parking slots



Booking arrangements

NeTEx is dedicated to data exchange and does NOT provide any API for the booking process.

BUT: NeTEx provides **information on the specific parameters of the booking rules** for different types of mobility services:

for conventional modes of operation, in particular flexible transport

for alternative modes of operation:

- ❖ Vehicle rental, Vehicle sharing, Vehicle pooling, Taxi

According to a Booking Policy, **Booking Arrangements** provide information on:

- ❖ **How** make a booking: e.g. by phone calling a driver, online, ... & Url of the website for the online booking.
- ❖ **Who** can make the booking: anyone, staff, specific members, .?
- ❖ Whether **cancellation** is possible
- ❖ Whether the **deposit** is required as a guarantee
- ❖ **When** make a booking: e.g. day of travel only



Also more detailed temporal parameters may be provided, such as

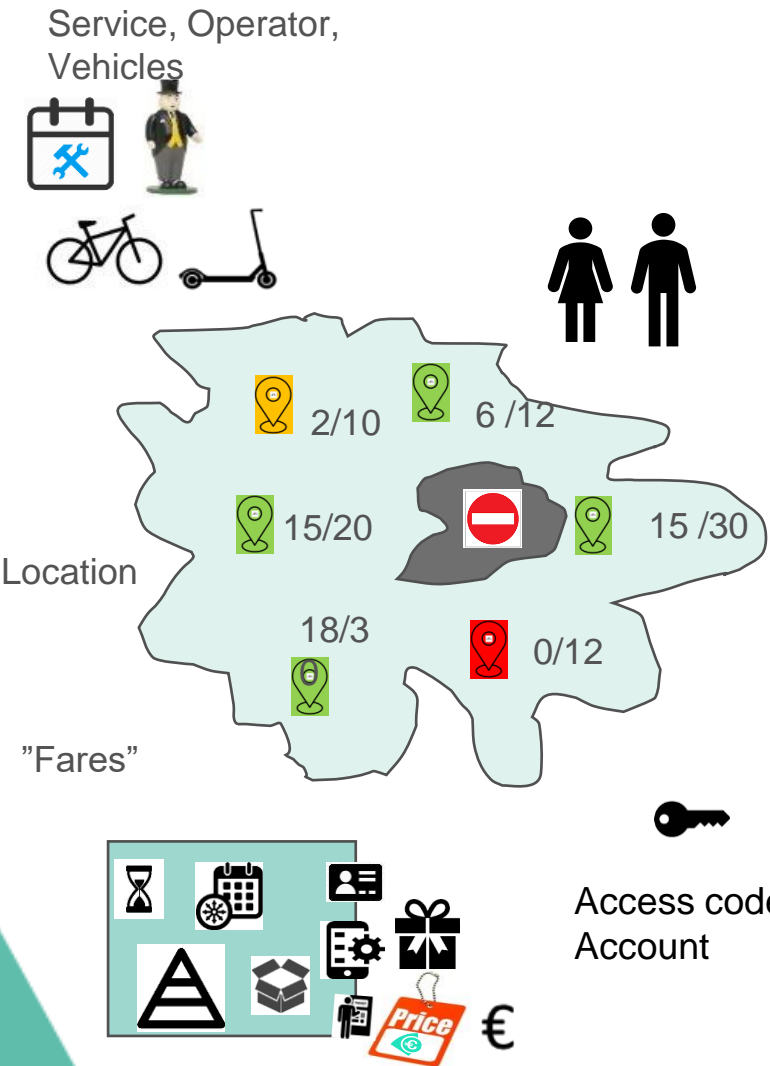
- the latest time in day that booking can be made
- minimum/maximum interval in advance of departure day or time that service may be ordered
- Minimum/maximum in advance of departure day or time that service may be ordered.



Bike sharing example



Booking a bike from a bike sharing platform...



NeTEx provides the data format for / information for

❖ Nature and Scope of service:

- Operator info including contact details for support, operating hours, etc.
- **Location:** Where are the cycle stations?
- What are the available / permitted zones of use (**Mobility constraint zone**)
- **Cycles and Cycle features** (Vehicle, type, model etc)

❖ How to use:

- How to find, book, pay (at station, online, app, smartcard, etc)
- Eligibility (minimum age, etc)
- Membership requirements (walk up use, or preregister)

❖ Products and Prices:

- **Tariff (timed, 24H pass, season pass, etc, etc)**
- **Sales offer** (e.g. stand alone, as part of bundle), media, etc, **Prices**

❖ Sales Transactions

- **Vehicle Access Code:** (access credentials of the vehicle)
- **Customer Account, Trip purchases** - electronic representation,

SIRI provides APIs for

- The real time availability of vehicles
- The real time availability of parking slots

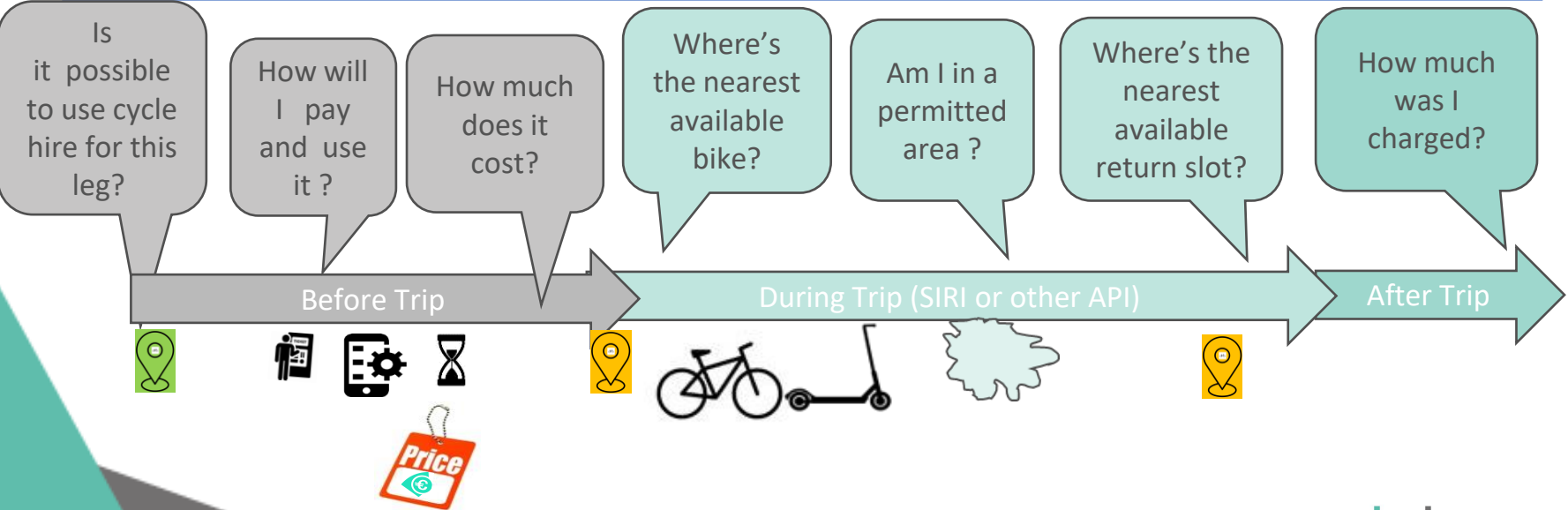
Does not cover booking / payment



Key Use Cases ...



- ❖ **Facilitating the integration of alternative modes in multimodal journey planning**
 - Making Cycle sharing service visible to journey planners to enable mixed mode trips.
 - Locations, geographical scope, operating times, etc.
 - Providing fares that can be bundled with other transport offers.
- ❖ **Providing uniform passenger information** on how to use, pay etc.
- ❖ **Real time availability of cycles/parking slots (SIRI)**
- ❖ **NB. SIRI Does not provide reservation /booking / payment API**





Car-pooling example

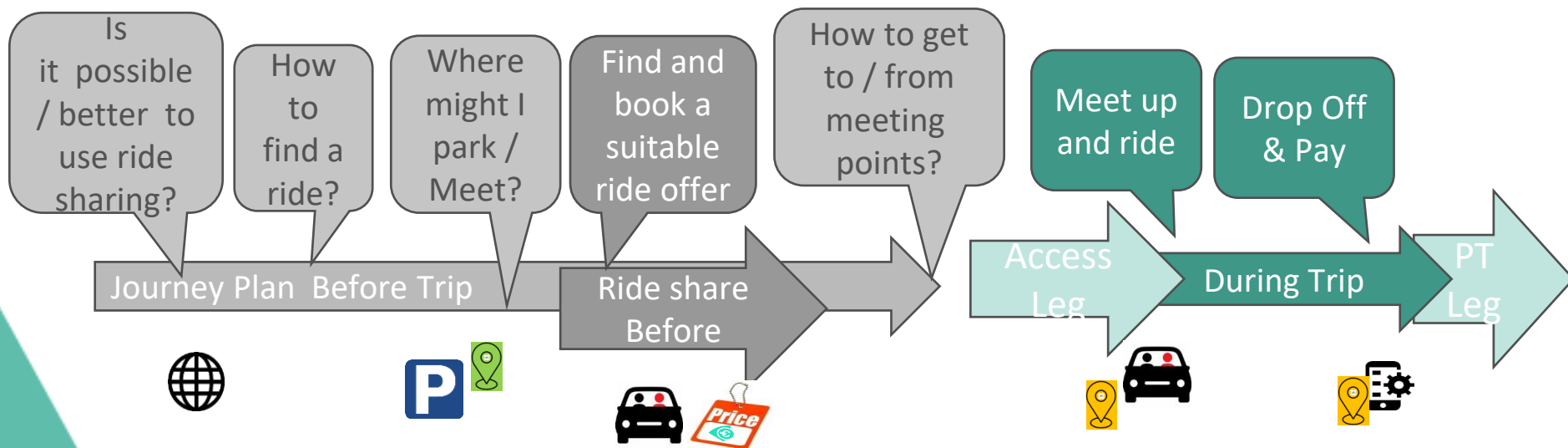


Key Use Cases ...

❖ Ride sharing legs as an option for multimodal journey planners

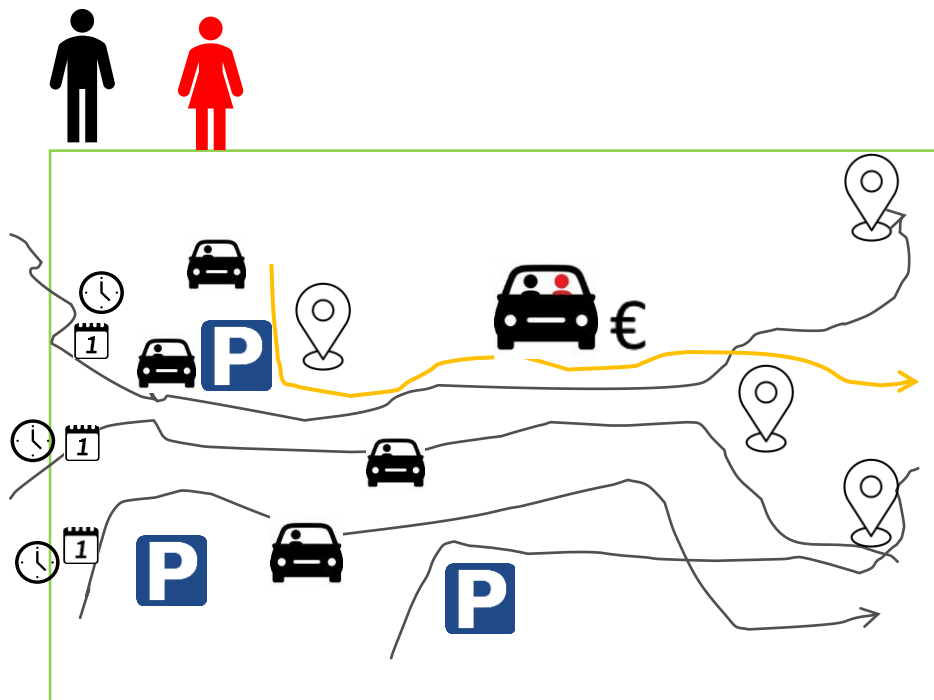
- Looking for rides to cover trips for places or times for which there is no or poor PT coverage
- Building Access / PT legs either end of a ride share
 - Locations, geographical scope, operating times, etc.
 - Standardised model for users, drivers & their preferences that can be integrated with a Customer account

❖ NB. Does not provide car pooling API: offer/ reservation /booking / payment API – use





Booking a ride with car pooling...



NeTEx provides the data format for / information for

❖ Nature and Scope of service:

- Area of Coverage
- Vehicle Pooling Parking,
- Operator info including websites, apps, etc
- Booking arrangements
- Membership requirements

❖ Possible Journeys:

- Drivers, Riders
- Offers, Meeting Points

❖ Products and Prices for intermodal Itinerary:

- Single Journey + Ride price
- Customer Account
- Customer purchase record

Various car pooling APIs

- Ride can be trip leg in intermodal itinerary
- The real time availability of parking slots



Find the supportive material you need!



Material

Check with your National standardisation Body the official documentation under the name: **CEN/TS 16614-5:2022 (E)**

GitHub for XSD and XML examples

https://github.com/NeTEx-CEN/NeTEx/tree/master/xsd/netex_part_5

<https://github.com/SIRI-CEN/SIRI>

NeTEx website

<https://www.netex-cen.eu/wp-content/uploads/2021/03/NeTEx-extension-for-New-Modes-Detailed-Scope-v04.pdf>

https://netex-cen.eu/?page_id=540

DATA4PT wiki page

https://data4pt.org/w/index.php?title=NeTEX#NeTEx_Part_5_for_New_Modes

(including mapping with GBFS)

[Discussion](#)

DATA4PT webpage : [Training material](#)



Material

Transmodel website

<https://www.transmodel-cen.eu/downloads/>



Thank you for your attention!

<https://data4pt-project.eu/>



DATA4PT
@Data4PT



DATA4PT project

Data4PT has received funding from the European Union's DG for Mobility and Transport under grant agreement No MOVE/B4/SUB/2019-104/CEF/PSA/SI2.821136